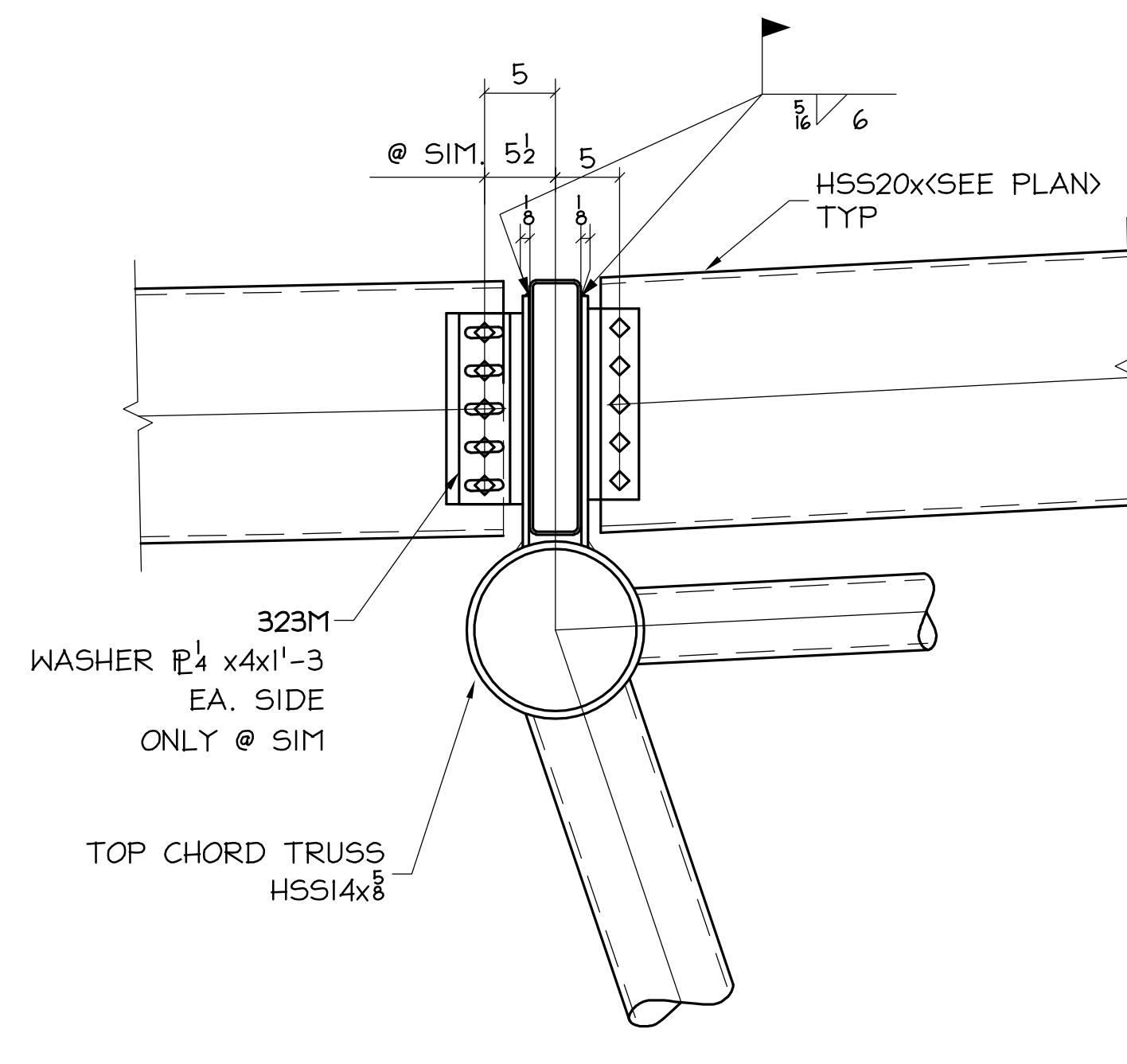
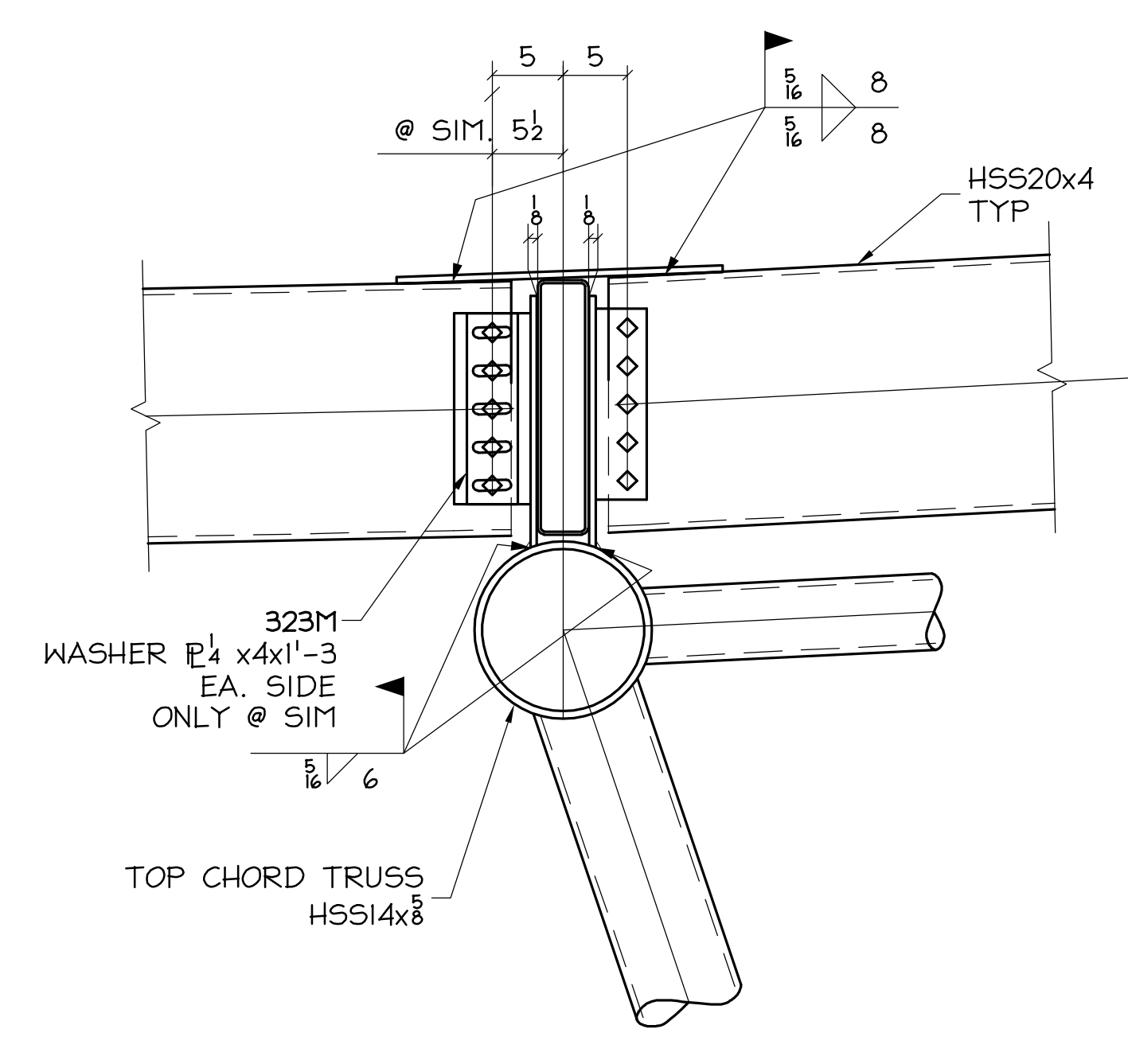


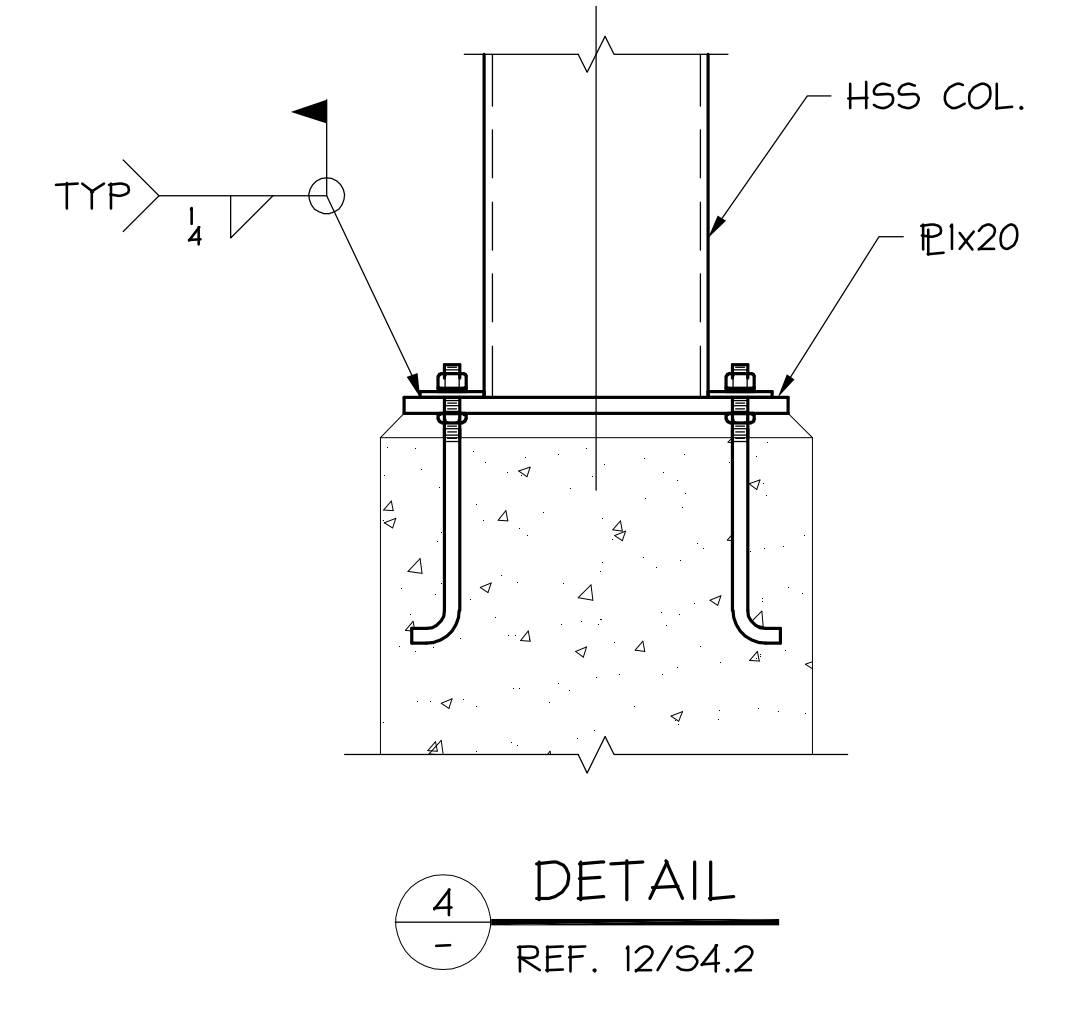
1  
-  
DETAIL  
REF. 3/59.3



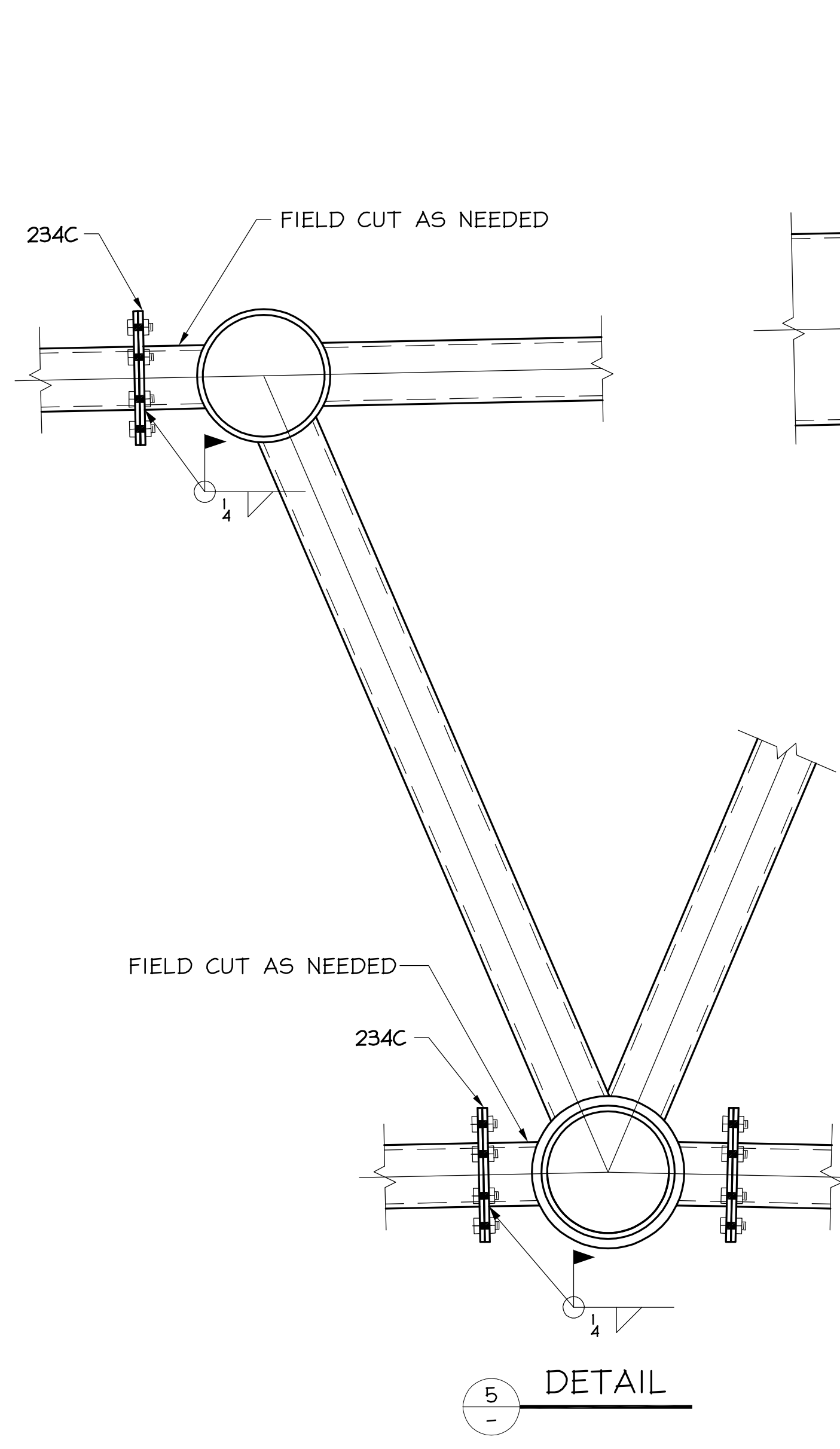
2  
-  
DETAIL



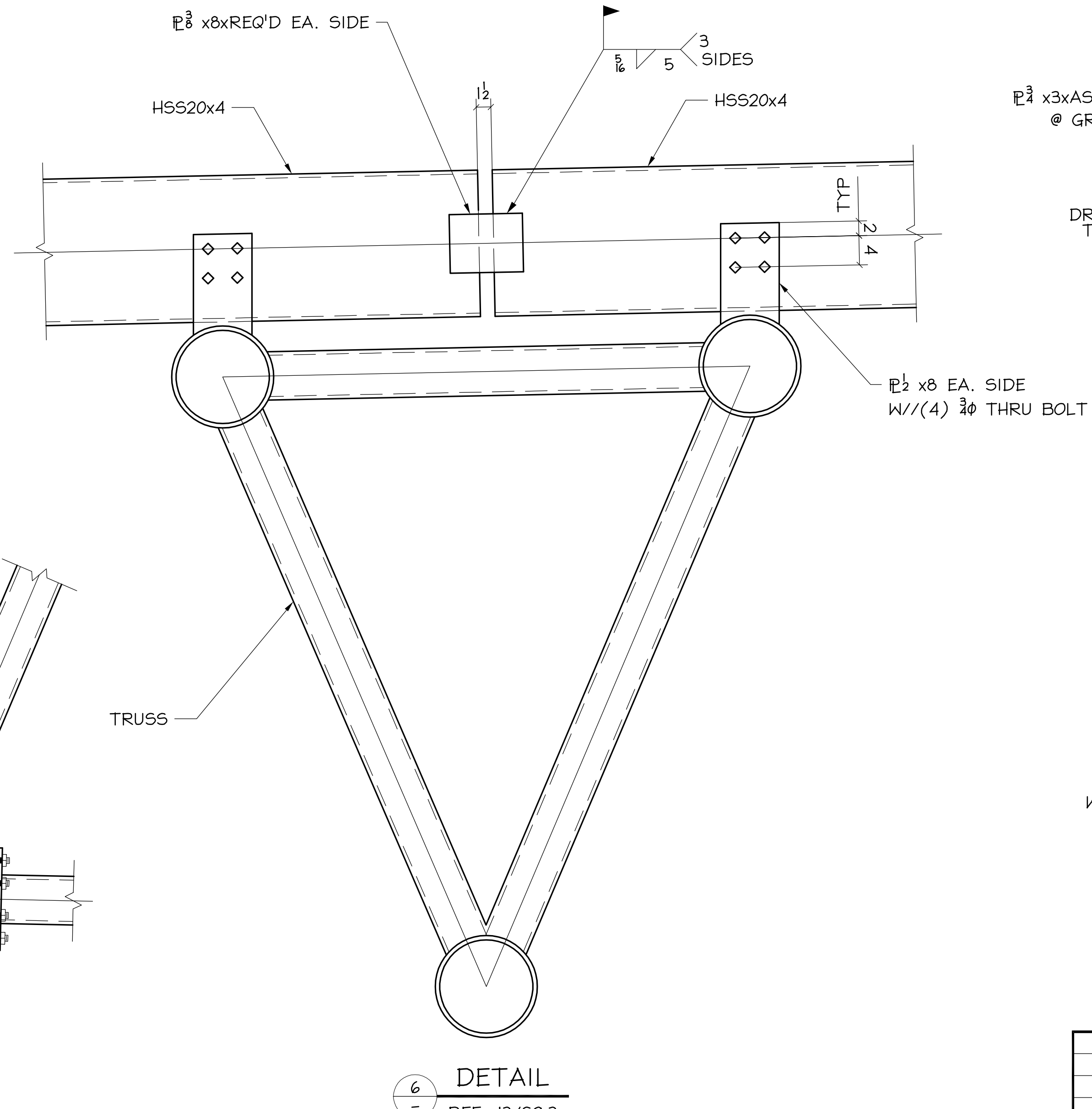
3  
-  
DETAIL



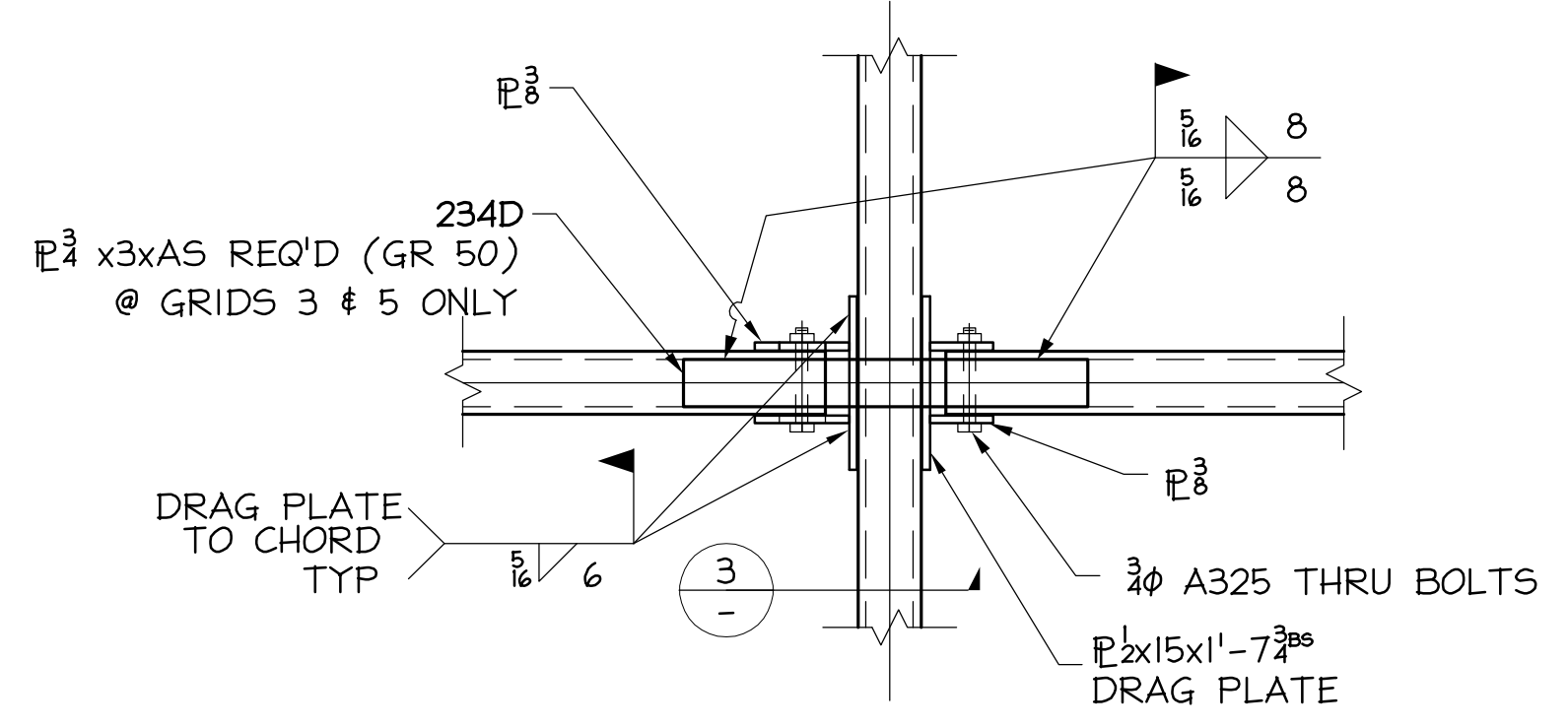
4  
-  
DETAIL  
REF. 12/54.2



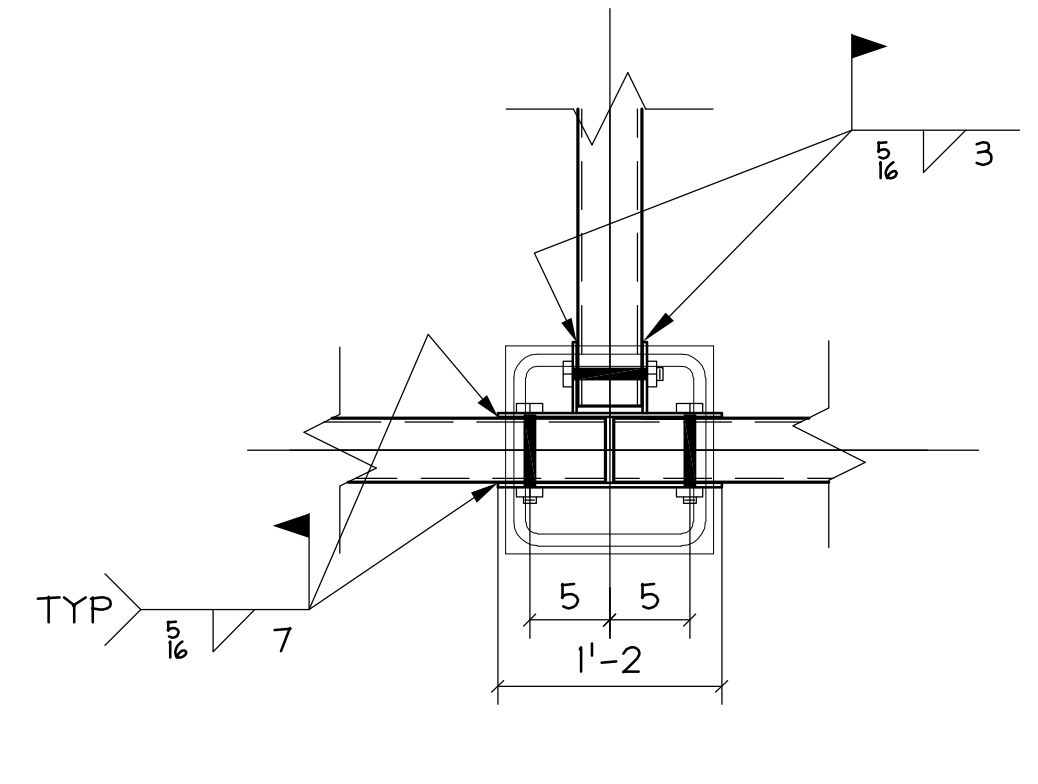
5  
-  
DETAIL



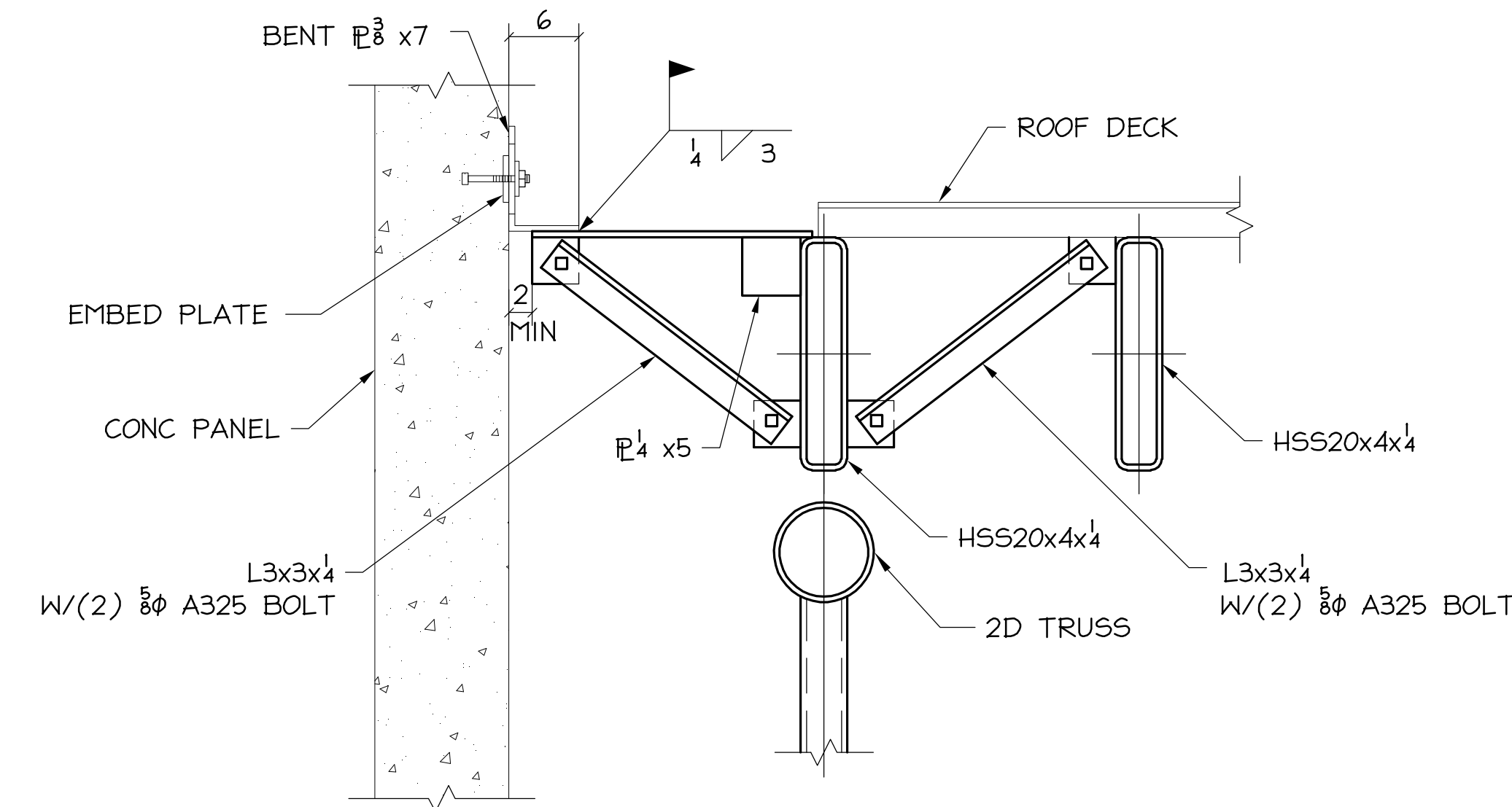
6  
-  
DETAIL  
REF. 13/59.3



7  
-  
DETAIL  
REF. 3/59.3



8  
-  
DETAIL  
REF. 5/59.3



9  
-  
DETAIL  
REF. 6/59.3

J:\COLUMBIA-WIRE-AND-IRON\15-114-001-LEVERGREEN-WATER-PARK\ADJ-SUBMITTAL--RECORD--\20100303-01(ZB-5C-PARTIAL-FAB)\PLANS\E16.DWG, 3/7/10 9:34am FORD medias.mcafee

VERIFICATION OF DIMENSIONS, DETAILS, AND ETC. ARE REQUESTED WHERE INDICATED. IF EACH VERIFICATION IS NOT NOTED OTHERWISE, IT WILL BE ASSUMED TO BE CORRECT AS SHOWN

REV	DATE	BY	DESCRIPTION	DWG STATUS	DATE
3	3/2/10	WT	For Field Use - Zone 5B # 5C		
2	2/3/10	LC	For Approval - Zone 5B # 5C	FOR FABRICATION	
1	2/2/10	WT	For Field Use - Zone 1B	FOR FABRICATION	
B	12/18/09	WT	Revised Per New Designs & New Info.	FOR PURCHASING	
A	12/4/09	WT	For Approval	FOR APPROVAL	

**EVERGREEN  
WATER PARK  
MCMINNVILLE, OREGON**

ENGR: MACKENZIE  
CONTR: HOFFMAN

ADI / ANGLE DETAILING, INC.  
ADI JOB# 15-114-001

**COLUMBIA WIRE & IRON WORKS**  
5555 N. Channel Portland, Ore. 97217  
www.cwil.com/503-286-6600

DRAWN BY: LX#LJJ    CHK'D BY: ZGL    JOB NO: 15-114-001    DWG. NO: E16