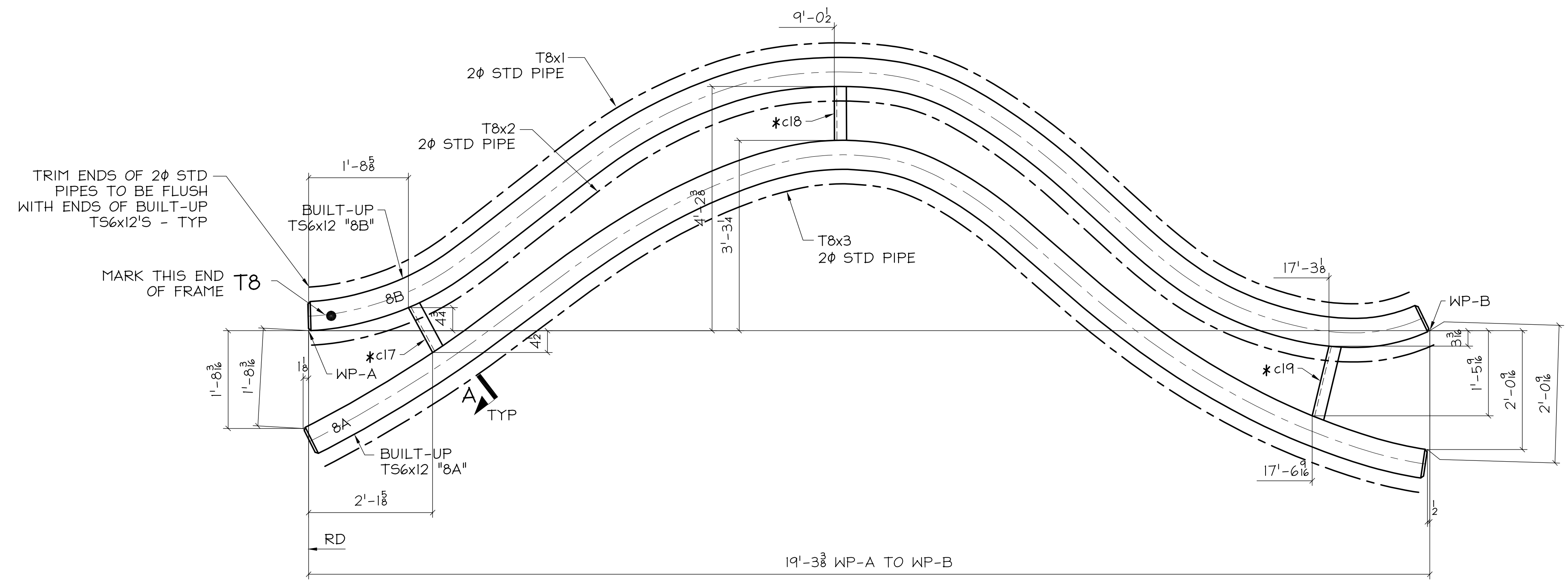


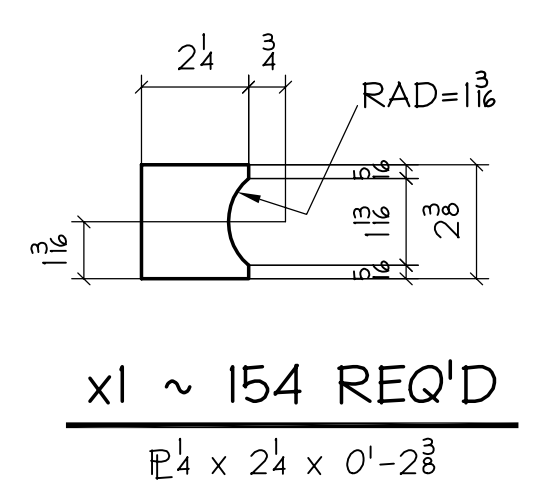
email: info@angleDetailing.com



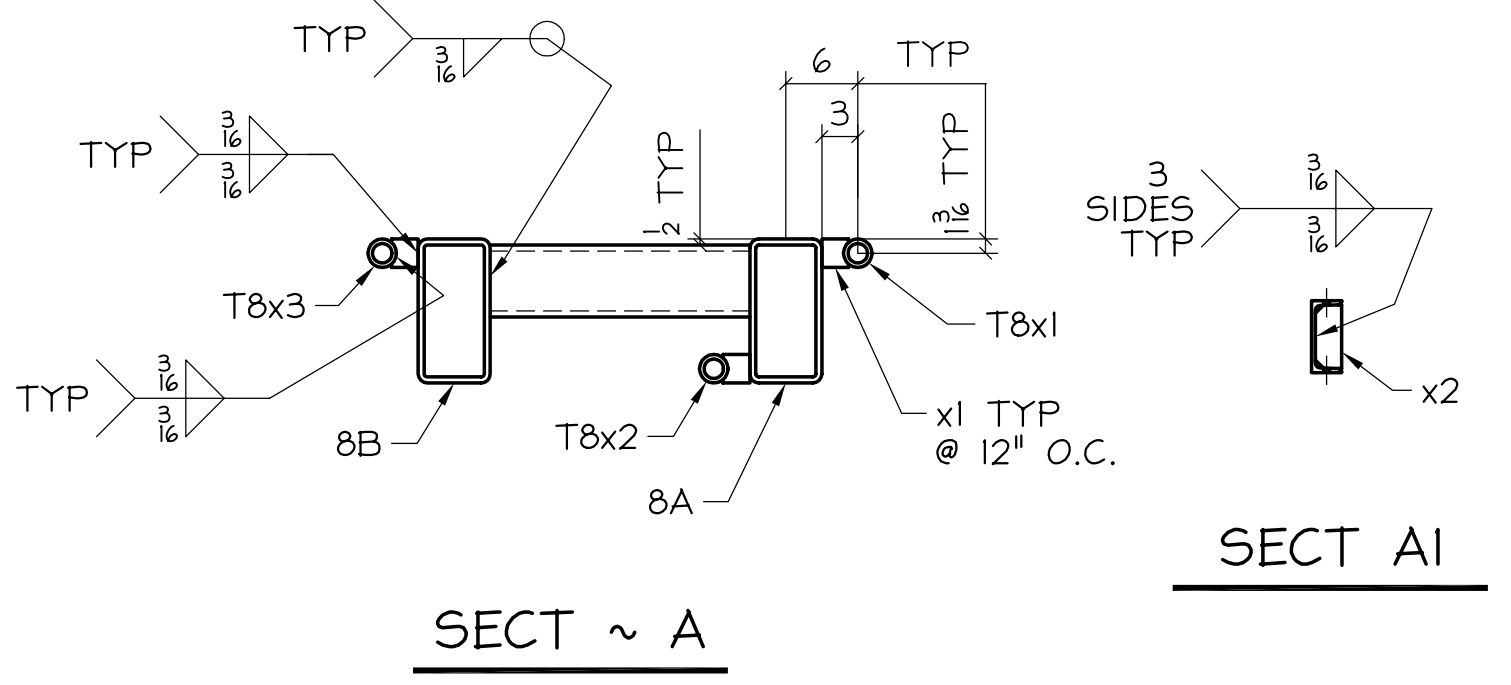
T8 ~ 6x12x2¹ TUBE FRAME ASSY

2φ PIPES TO BE CONT - SPLICE
CP WELD PIPES AS REQ'D.
ROLLING INFO FOR 2φ PIPES:
T8x1 - SEE DWG 8A-F1
T8x2 - SEE DWG 8A-F2
T8x3 - SEE DWG 8B-F1

*CHANNELS W/O HOLES ARE
NOT CRITICAL IN LOCATION.



BILL OF MATERIAL										BILL OF MATERIAL												
NO. TO SHIP	SHIP MARK	TOTAL NO PC	PC MARK	DESCRIPTION	LENGTH FT.	IN.	REMARKS	ADV. BILL	WEIGHT UNIT	TOTAL	NO. TO SHIP	SHIP MARK	TOTAL NO PC	PC MARK	DESCRIPTION	LENGTH FT.	IN.	REMARKS	ADV. BILL	WEIGHT UNIT	TOTAL	
ONE	T8			FRAME ASSY																		
		1	8A	BUILT-UP TS6x12			SEE DWG 8A															
		1	8B	BUILT-UP TS6x12			SEE DWG 8B															
		1	c17	MC6x12	0	10 1/2	SEE DWG S2															
		1	c18	MC6x12	0	11 1/8	SEE DWG S2															
		1	c19	MC6x12	1	3 1/8	SEE DWG S2															
		1	T8x1	2φ STD PIPE CURVED	22	0	SEE DWG 8A-F1															
		1	T8x2	2φ STD PIPE CURVED	22	0	SEE DWG 8A-F2															
		1	T8x3	2φ STD PIPE CURVED	22	0	SEE DWG 8A-F3															
		66	x1	E 4 x 2 1/2	0	2 3/8																



FABRICATION NOTES:

HOLES UNO: 1 1/8 x 1 SLOT
 WELD: E70XX
 REF DWG: E1
 MATERIAL UNO: A36 / TS=A500 GR.B
 PIPE=A53 TYPE E/S
 PAINT:

NOTES: ALL DIMS TO C's UNO
 ALL CURVES ARE PLANER (2D) VERIFICATION OF DIMENSIONS, DETAILS, AND ETC. ARE REQUESTED, WHERE INDICATED. IF EACH VERIFICATION IS NOT NOTED OTHERWISE, IT WILL BE ASSUMED TO BE CORRECT AS SHOWN.

REV	DATE	BY	DESCRIPTION	DWG STATUS	DATE
A	7/27/01	ADI	FOR APPL / FAB READY		

**GUGGENHEIM ART OF THE MOTORCYCLE
 VENETIAN CASINO RESORT
 LAS VEGAS, NV**

ENGR: LOCSHA ENGR'G / FOGA / TSA
 CONTR: TAYLOR
 ADI / ANGLE DETAILING, INC.
 ADI JOB# 2001-108

Columbia Wire & Iron Works
 5555 N. Channel Portland Or. 97217
 drew@CWII.com/503-286-6600

DRAWN BY: CG
 CHKD BY:
 JOB NO. 99-094003
 DWG. NO. 8

C:\NEW_WEB_PAGE\MOTOR-GUGGENHEIM\08.DWG 11/20/01 10:27am SQUARE.melissa