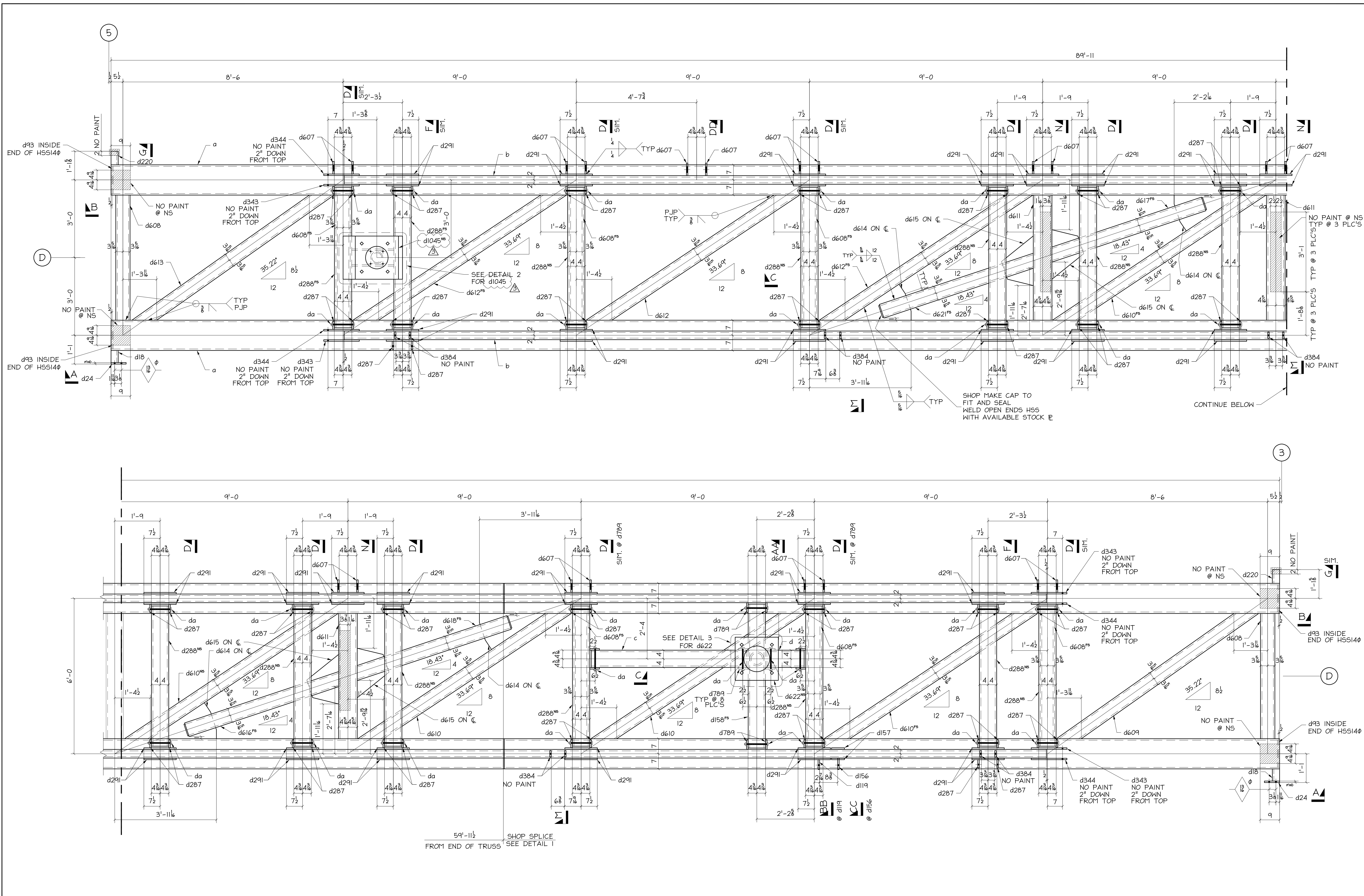


J:\COLUMBIA-WIRE-AND-IRON\15-114-001_CWP\PROJECT_MATERIALS\DWG_3/1/10 8:55am TORD mess-mooney



116A ~ TRUSS ~ ONE
PLAN VIEW
ZONE 5B

SHOP NOTE: WORK THIS DWG WITH 116b, 116c, 116d, 116f, 116g.

VERIFICATION OF DIMENSIONS, DETAILS, AND ETC. ARE REQUESTED WHERE INDICATED. IF EACH VERIFICATION IS NOT NOTED OTHERWISE, IT WILL BE ASSUMED TO BE CORRECT AS SHOWN

REV	DATE	BY	DESCRIPTION	DWG STATUS	DATE
3	3/4/10	WT	Revised		
2	1/19/10	WT	Revise no paint area		
1	1/7/10	WT	Issue For Fabrication		
C	2/30/09	WT	Revised Per New Designs & New Info.	FOR FABRICATION	
B	12/18/09	WT	Revised Per New Designs & New Info.	FOR FABRICATION	
A	12/4/09	WT	For Approval	FOR APPROVAL	

ENGR: MACKENZIE	ADJ: ANGLE DETAILING, INC.
CONTR: HOFFMAN	ADJ: JOB# 15-114-001
COLUMBIA WIRE & IRON WORKS	
5555 N. Channel Portland, Ore. 97217	
www.cwiil.com/503-286-6600	
DRAWN BY: LX	CHKD BY: DZH
JOB NO. 15-114-001	DWG. NO. 116a